



The Giant Jewellery

...delight for your interior

SANS  SOUCI



Our inspiration was jewellery – its elegance, beauty, and originality. We transformed it into light fixtures and a wall decoration that possess the same traits. In order to become the jewels of the interior in a literal sense, they were refined by surface glazing and metallic colours, including luxury gold and silver.

No.1 Pearls

SANS  SOUCI

A token of luxury and beauty, and an accessory that never comes out of fashion. They adorn, attract attention, and add graceful elegance. Every woman craves for this sumptuous necklace, and we have created one for your interior.

A necklace made of hand-blown glass components. It perfectly imitates pearls thanks to surface glazing.



Pearls				SANS SOUCI	
No. 01-A		Art. No C 6138/040/002		Light fixture	
Dimensions	W 7500×L 3200×H 3000mm	Glass parts	Hand-blown bubbles*	Metal finish	Stainless steel
Trimming	—	Light source	LED strips	Total wattage	—
*Sandblasted, coloured (pearl imitation) and metal coated				Designer	Katarína Kotuláčová



— No. 01-A —

Pearls				SANS SOUCI	
No. 01-B		Art. No C 6138/040/003		Light fixture	
Dimensions	W 7500×L 3200×H 3000mm	Glass parts	Hand-blown bubbles*	Metal finish	Stainless steel
Trimming	—	Light source	LED strips	Total wattage	—
*Sandblasted, metal coated, grey smoke glass + metal coated				Designer	Katarína Kotuláčová



— No. 01-B —

Pearls

SANS  SOUCI

No. 01-C	Art. No C 6138/015/003	Light fixture	
Dimensions W 3000×L 1000×H 1700 mm	Glass parts Hand-blown bubbles*	Metal finish	Stainless steel
Trimmings –	Light source LED strips	Total wattage	–
*Sandblasted, coloured (pearl imitation) and metal coated		Designer	Katarína Kotuláčová



– No. 01-C –



– No. 01-C (detail) –

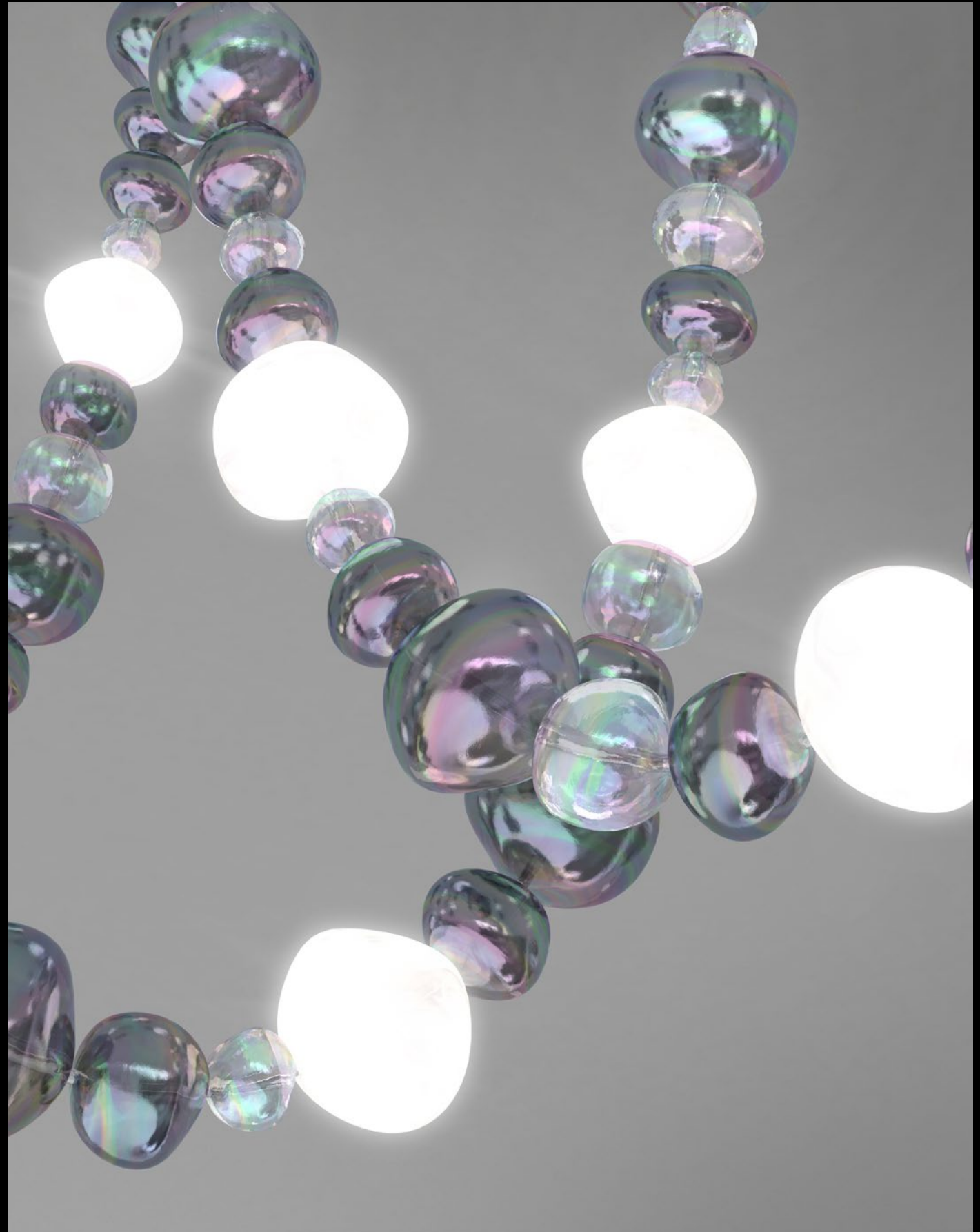
Pearls

SANS  SOUCI

No. 01-D	Art. No C 6138/015/004	Light fixture	
Dimensions W 3000×L 1000×H 1700 mm	Glass parts Hand-blown bubbles*	Metal finish	Stainless steel
Trimmings –	Light source LED strips	Total wattage	–
*Sandblasted, metal coated, grey smoke glass + metal coated		Designer	Katarína Kotuláčová



– No. 01-D –



– No. 01-D (detail) –



Pearls

SANS SOUCI

No. 01-E, 01-F		Art. No W 6138/002/001		Wall sconce	
Dimensions	W 150×H 850×D 350mm	Glass parts	Hand-blown bubbles*	Metal finish	Stainless steel
Trimmings	–	Light source	LED strips	Total wattage	–
*No. 01-E: Sansblasted, coloured and metal coated				Designer	Katarína Kotuláčová
*No. 01-F (detail): Sandblasted, metal coated, grey smoke glass + metal coated					



Pearls

SANS SOUCI

No. 01-G, 01-H		Art. No W 6138/002/002		Wall sconce	
Dimensions	W 150×H 850×H 350mm	Glass parts	Hand-blown bubbles*	Metal finish	Stainless steel
Trimmings	–	Light source	LED strips	Total wattage	–
*No. 01-G: Sandblasted, metal coated, grey smoke glass + metal coated				Designer	Katarína Kotuláčová
*No. 01-H (detail): Sandblasted, grey smoke glass + metal coated					

No.2 Flacons

SANS  SOUCI

An imitation of luxurious perfume bottles. Fashion could not possibly exist without compelling fragrances. Moreover, designer flacons are an indispensable decoration of bathrooms and wardrobes. We drew inspiration from traditional cut-glass baskets and replaced the octagons with cuts in the shapes of lenses.

Hand-blown shapes with lens-like cuts. Made using the overlaying technique and painted with real gold or platinum. Other colours can be achieved by applying a luster coating.



Flacons

SANS SOUCI

No. 02-A		Art. No. P 6139/001/002		Pendant	
Dimensions	Dia 300 × H 500 + L mm (one component)	Glass parts	Hand-blown*	Metal finish	Polished nickel
Trimmings	Crystal cut ball & drops	Light source	1× LED E14	Total wattage	6 W
*Cut, overlaid and painted with real gold, platinum, bronze or red brass				Designer	Kateřina Lenikusová



– No. 02-A –

Flacons

SANS SOUCI

No. 02-B, 02-C		Art. No. T 6139/001/001 (Table lamp) W 6139/001/001 (Wall sconce)		Table lamp / Wall sconce	
Dimensions	W 300 × H 250 mm (Table lamp) W 300 × H 330 × D 200 mm (Wall sconce)	Glass parts	Hand-blown*	Metal finish	Polished nickel
Trimmings	Crystal cut rosette / rosette & drops	Light source	1× LED E14	Total wattage	6 W
*Cut, overlaid and painted with gold/silver				Designer	Kateřina Lenikusová



– No. 02-B, 02-C –



Flacons			SANS SOUCI		
No. 02-D, 02-E	Art. No. F 6139/001/001 (02-D), F 6139/001/001A (02-E)	Floor lamp			
Dimensions	Dia 300×H 1800 mm	Glass parts	Hand-blown*	Metal finish	Black nickel / Polished brass
Trimmings	Crystal cut rosette & drops	Light source	1× LED E14	Total wattage	6W
*Cut, overlaid and painted with bronze			Designer	Kateřina Lenikusová	



Flacons			SANS SOUCI		
No. 02-F, 02-G	Art. No. T 6139/001/002 (02-F), T 6139/001/002A (02-G)	Floor lamp			
Dimensions	Dia 300×H 800 mm	Glass parts	Hand-blown*	Metal finish	Polished nickel
Trimmings	Crystal cut ball & drops	Light source	1× LED E14	Total wattage	6W
*Cut, overlaid and painted with gold/silver			Designer	Kateřina Lenikusová	

No.3 Earrings


SANS  SOUCI

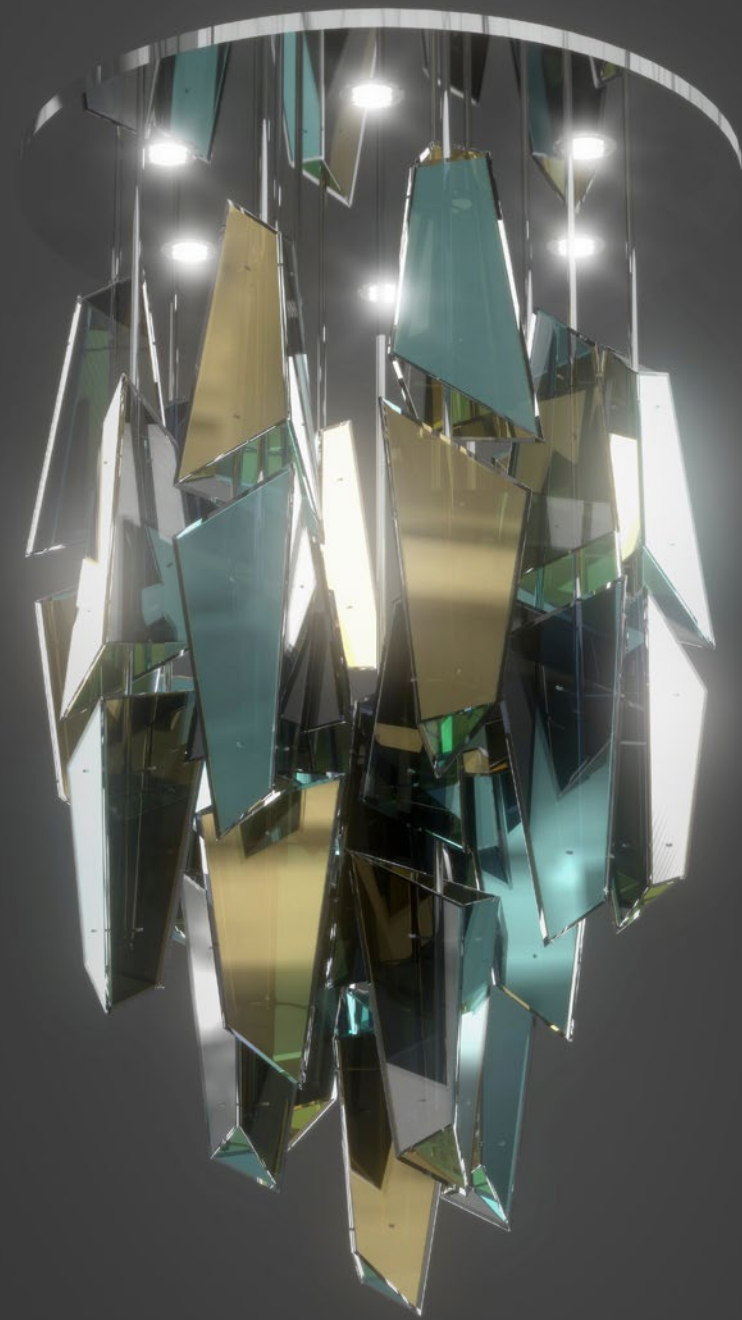
If they are of distinct design, you do not often need any other jewellery to adorn your day or evening dress. We found inspiration in polygons, the large faceted surfaces of which bring out the colourful metallic effects.


Flat-glass polygons with facets. The composition of colours includes metallic gold, silver, and azure violet.





Earrings				SANS  SOUCI	
No. 03-A		Art. No C 6140/040/002		Light fixture	
Dimensions	Dia. 1200×H 3600mm	Glass parts	Prisms*	Metal finish	Polished stainless steel
Trimmings	—	Light source	LED + 6×GU10	Total wattage	—
* Metal coated – gold, silver, azure				Designer	Martin Lukačka



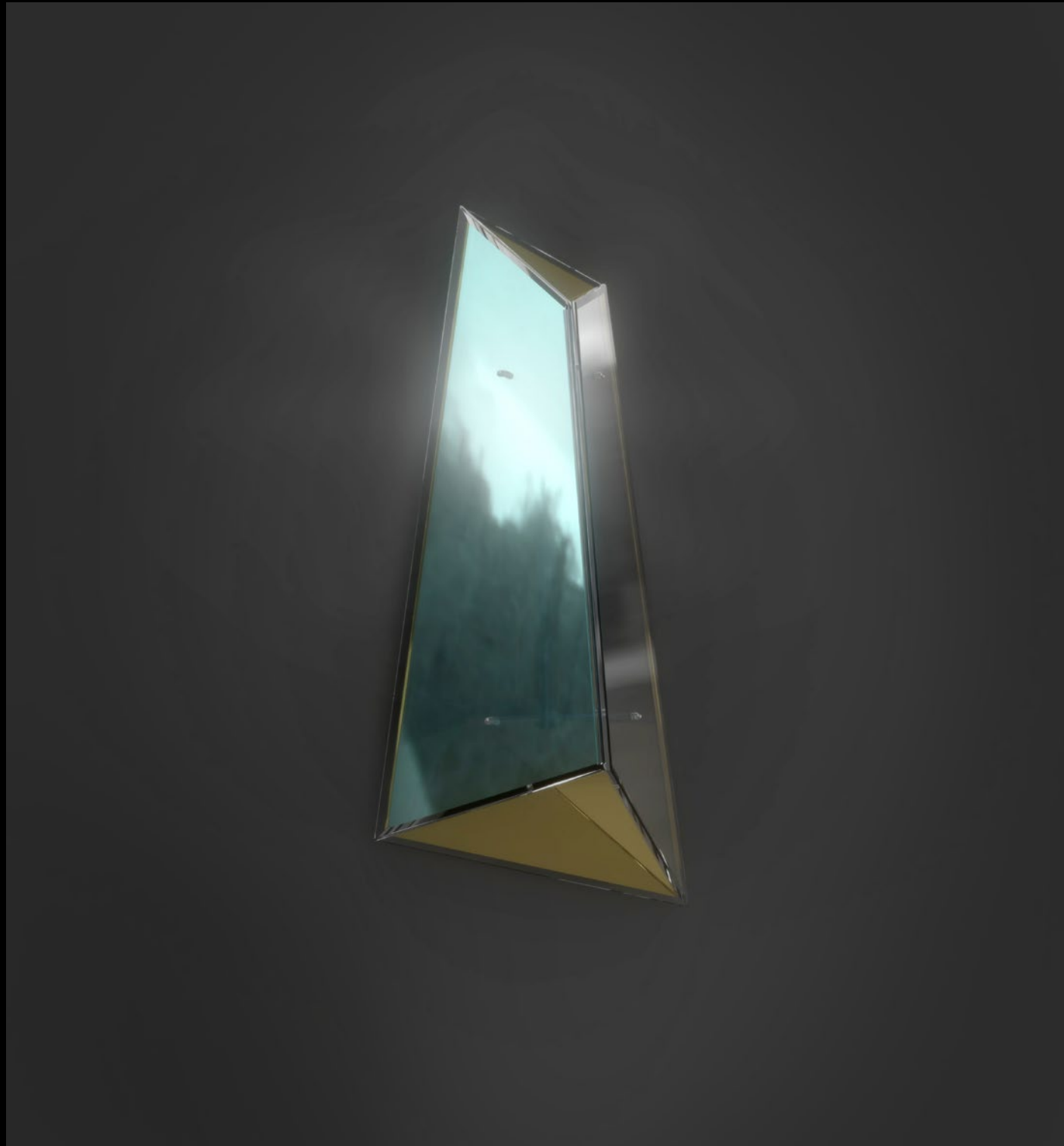
Earrings				SANS  SOUCI	
No. 03-B		Art. No C 6140/020/003		Light fixture	
Dimensions	Dia 1000×H 1500mm	Glass parts	Prisms*	Metal finish	Polished stainless steel
Trimmings	—	Light source	LED + 6×GU10	Total wattage	—
* Metal coated – gold, silver, azure				Designer	Martin Lukačka

Earrings				SANS  SOUCI	
No. 03-C		Art. No T 6140/001/001		Table lamp	
Dimensions	Dia 230×H 560 mm	Glass parts	Prisms*	Metal finish	Polished stainless steel
Trimmings	—	Light source	LED	Total wattage	—
* Metal coated – gold, silver, azure				Designer	Martin Lukačka



– No. 03-C –

Earrings				SANS  SOUCI	
No. 03-D		Art. No W 6140/001/001		Wall sconce	
Dimensions	W 180×H 440×D 190 mm	Glass parts	Prisms*	Metal finish	Polished stainless steel
Trimmings	—	Light source	LED	Total wattage	—
* Metal coated – gold, silver, azure				Designer	Martin Lukačka



– No. 03-D –

Earrings

SANS  SOUCI

No. 03-E		Art. No P 6140/002/001		Pendant	
Dimensions	Dia 860×H 1200 mm	Glass parts	Prisms*	Metal finish	Polished stainless steel
Trimmings	—	Light source	LED	Total wattage	—
* Metal coated – gold, silver, azure				Designer	Martin Lukačka



— No. 03-E —

Earrings

SANS  SOUCI

No. 03-F		Art. No P 6140/002/002		Pendant	
Dimensions	Dia 860×H 1200 mm	Glass parts	Prisms*	Metal finish	Polished stainless steel
Trimmings	—	Light source	LED	Total wattage	—
* Metal coated – gold, silver, azure				Designer	Martin Lukačka



— No. 03-F —

No. 4 **Bracelet**


SANS  SOUCI

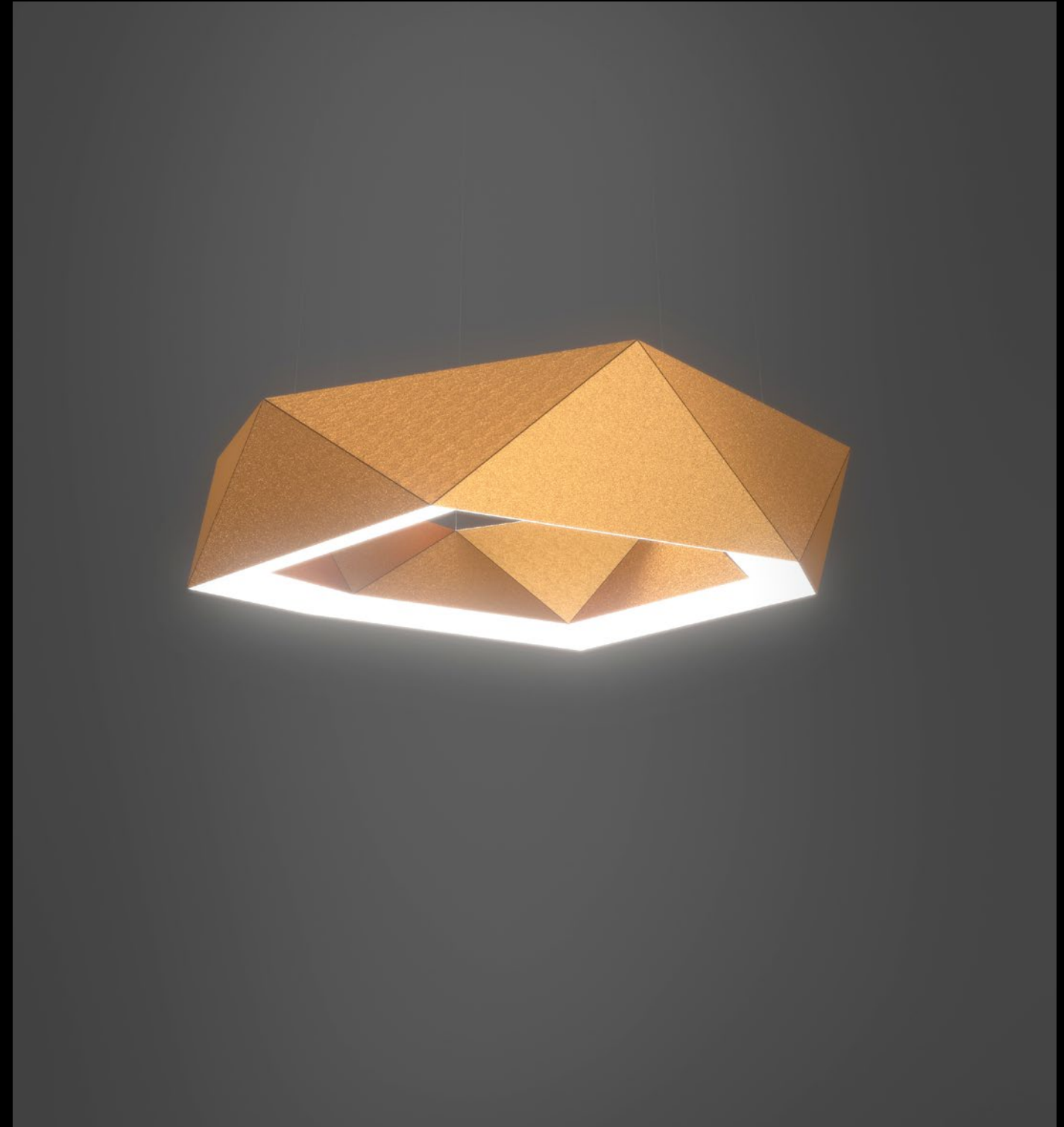
A wrist decoration and an indispensable accessory to go with a necklace or earrings. We opted for a robust design, inspired by polygons in terms of shape. Instead of a hand, we put the bracelet on a curtain made from cut crystal beads.

A cloth screen the colour of copper. Combined with cut beads of different sizes.





Bracelet			SANS  SOUCI	
No. 04-A	Art. No. C 7141/006/001	Light fixture		
Dimensions	Dia 1300 × H 2000 mm	Glass parts	—	Metal finish
Trimmings	Crystal cut beads and drops	Light source	LED	Stainless steel
Textil shade of bronze colour		Total wattage	—	Designer
		Martin Lukačka		



Bracelet			SANS  SOUCI	
No. 04-B	Art. No. C 6141/006/001	Pendant		
Dimensions	Dia 1300 × H 400 mm	Glass parts	—	Metal finish
Trimmings	—	Light source	LED	Stainless steel
Textil shade of bronze colour		Total wattage	—	Designer
		Martin Lukačka		

Bracelet

SANS  SOUCI

No. 04-C		Art. No. C 6141/012/002		Pendant	
Dimensions	Dia 1300mm × H 900mm	Glass parts	—	Metal finish	Stainless steel
Trimmings	—	Light source	LED	Total wattage	—
Textil shade of bronze colour				Designer	Martin Lukačka

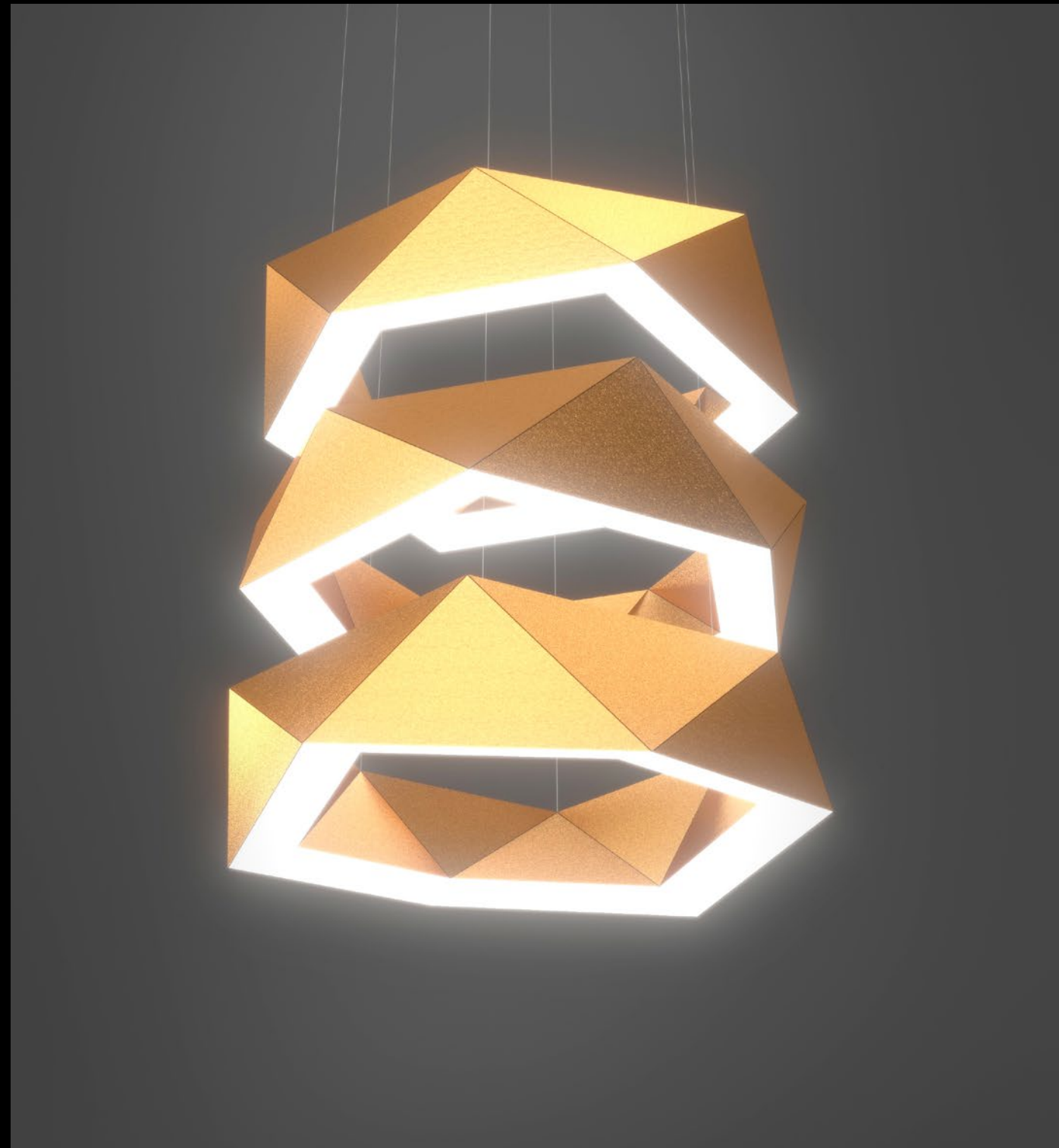


— No. 04-C —

Bracelet

SANS  SOUCI

No. 04-D		Art. No. C 6141/018/003		Pendant	
Dimensions	Dia 1300mm × H 1400mm	Glass parts	—	Metal finish	Stainless steel
Trimmings	—	Light source	LED	Total wattage	—
Textil shade of bronze colour				Designer	Martin Lukačka

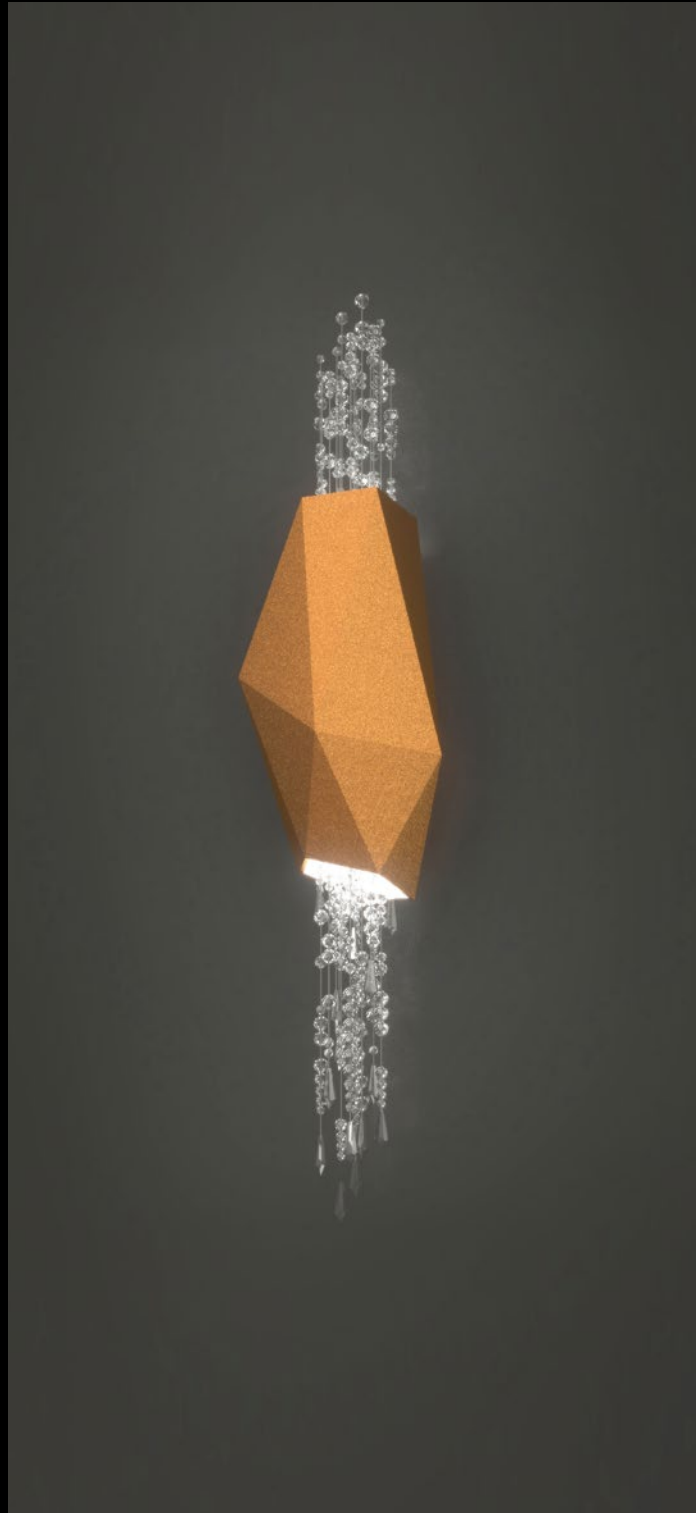


— No. 04-D —

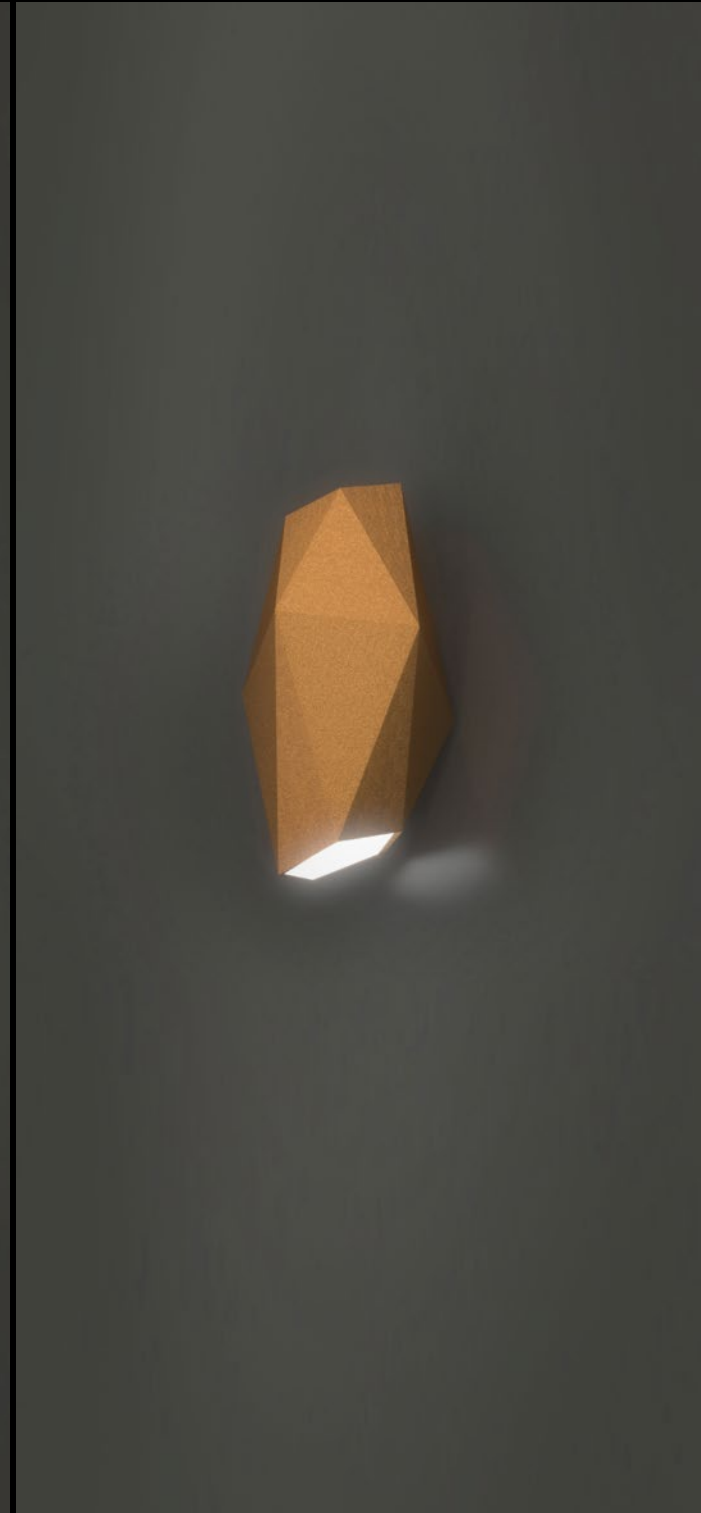
Bracelet

SANS SOUCI

No. 04-E/F		Art. No W 7141/002/001	Wall sconce		
Dimensions	Dia 210×H 850×D 250mm	Glass parts	—	Metal finish	Stainless steel
Trimmings	04-E:Crystal beads and drops / 04-F: —	Light source	LED	Total wattage	—
Textil shade of bronze colour			Designer	Martin Lukáčka	



— No. 04-E —

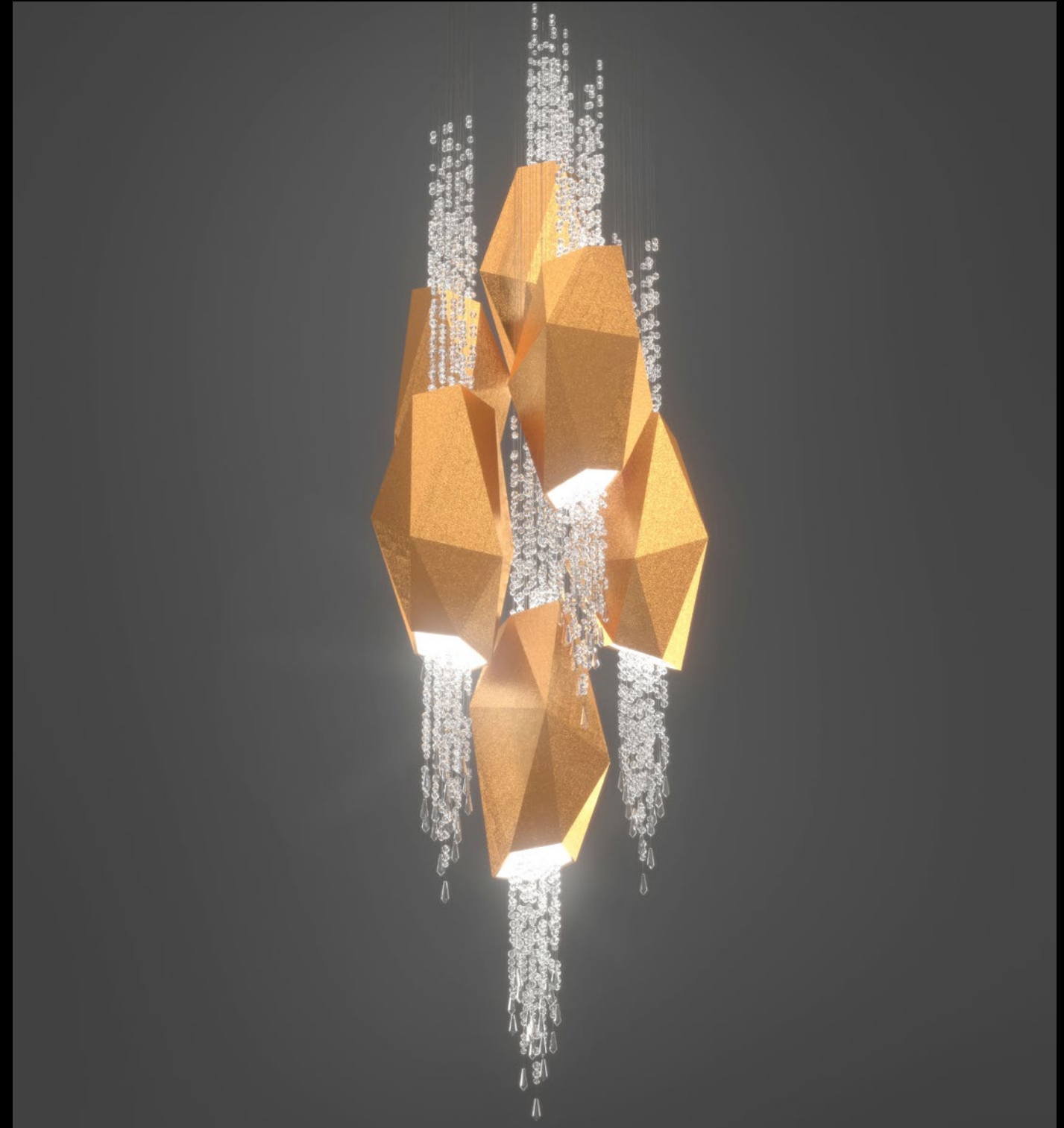


— No. 04-F —

Bracelet

SANS SOUCI

No. 04-G		Art. No C 7141/012/005	Lighting cluster		
Dimensions	Dia 900×H 3000mm	Glass parts	—	Metal finish	Stainless steel
Trimmings	Crystal beads and drops	Light source	LED	Total wattage	—
Textil shade of bronze colour			Designer	Martin Lukáčka	



— No. 04-G —

Bracelet

SANS  SOUCI

No. 04-H		Art. No T 7141/001/001		Floor lamp	
Dimensions	Dia 210×H 850 mm	Glass parts	—	Metal finish	Stainless steel
Trimmings	Crystal beads and drops	Light source	LED	Total wattage	—
Textil shade of bronze colour				Designer	Martin Lukačka



— No. 04-H —

Bracelet

SANS  SOUCI

No. 04-I		Art. No T 6141/001/001		Floor lamp	
Dimensions	Dia 210×H 850 mm	Glass parts	—	Metal finish	Stainless steel
Trimmings	—	Light source	LED	Total wattage	—
Textil shade of bronze colour				Designer	Martin Lukačka



— No. 04-I —

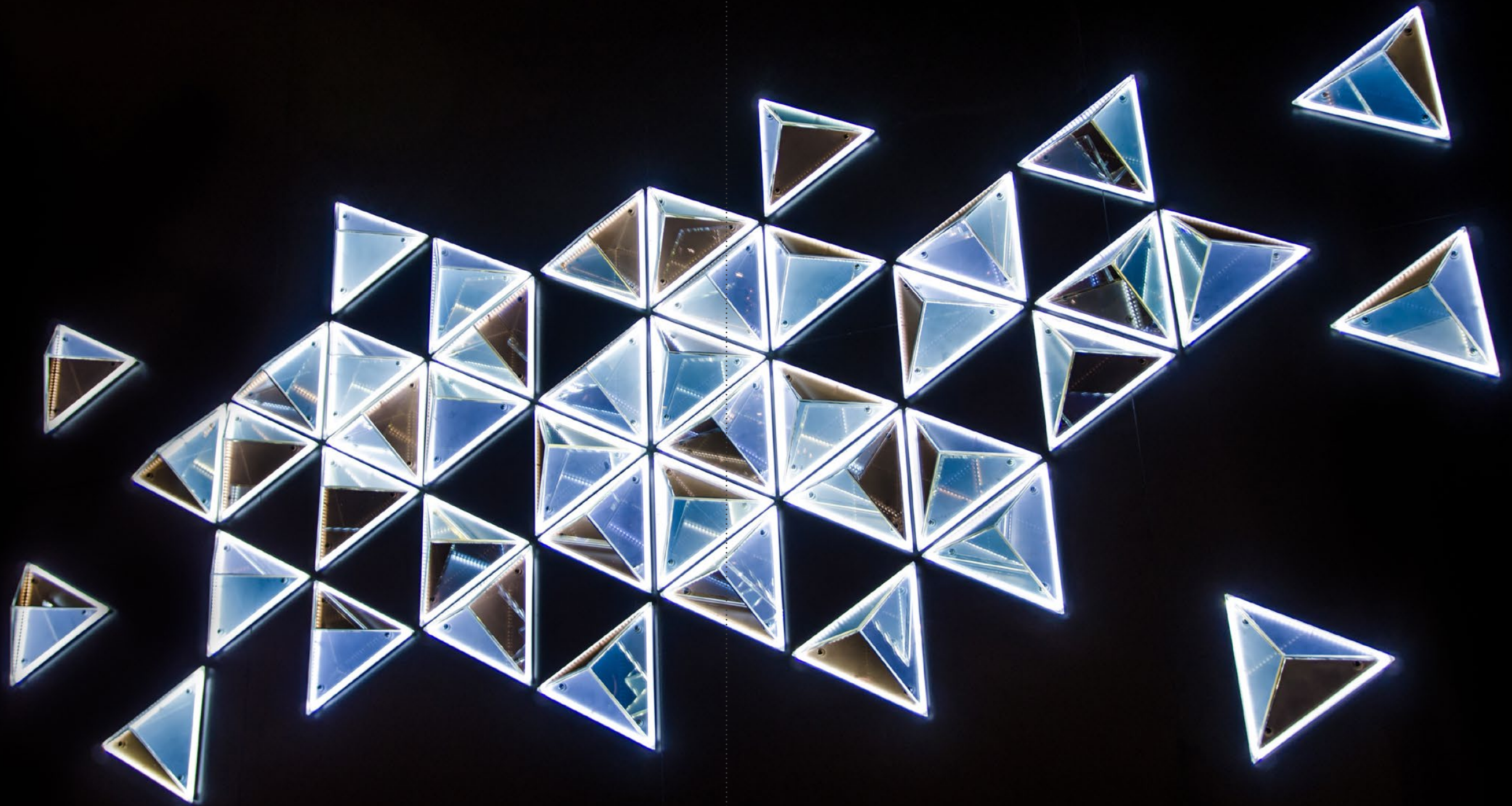
No.5 **Brooch**

SANS  SOUCI

An accessory to glam up fashionable jackets or coats, and a must in every jewellery box. We "pinned" one to a large, empty wall. The pyramids in metallic colours become a dominating feature and a spectacular mirror of the entire interior.

Flat-glass triangles with facets. The composition of colours includes metallic gold, silver, and azure violet.





Brooch

SANS  SOUCI

No. 05	Art. No. W 9142/050/001	Wall artwork
Dimensions W 3 400 × H 1440 × H 140 mm	Glass parts Prisms*	Metal finish Polished stainless steel
Trimmings —	Light source LED stripes	Total wattage —
*Metal coated – gold, silver and azure violet		Designer Martin Lukačka

